

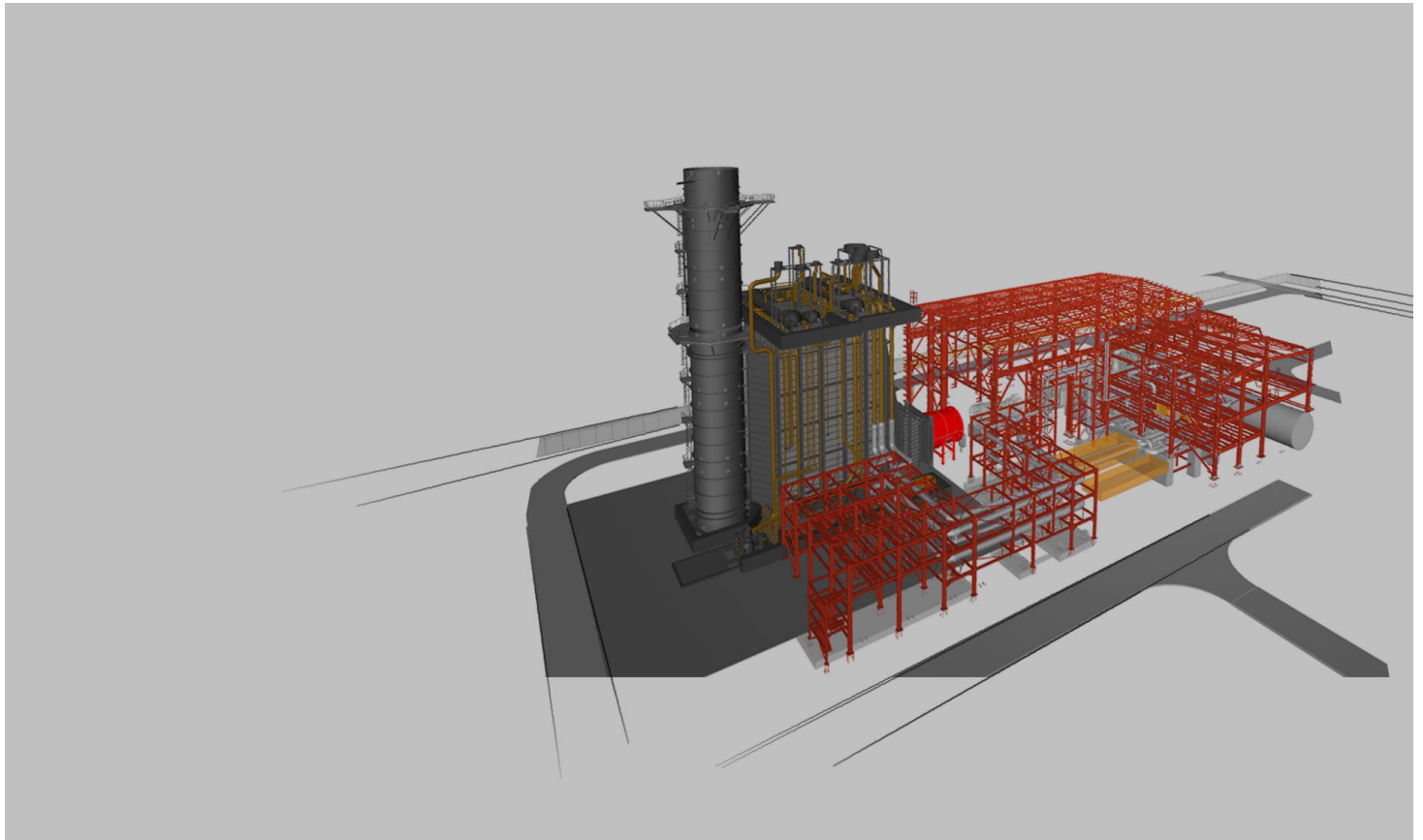


840MW Combined Cycle Power Plant Project

Alexandroupolis, Greece / 2023-2024

Structural type
Characteristics
Owner
Client
Scope

Metal structures and foundations including the turbine pedestal
Braced metal structures with direct foundations and turbine pedestal
ELECTROPARAGOGI SA
Empresarios Agrupados Internacional - Unidad de Negocio Plantas Térmicas
preliminary design



Combined Cycle Gas Turbine that comprises one combined cycle unit in a 1-1-1 configuration (single shaft configuration) and generates 840 MW. Located at the Industrial Area of Alexandroupolis (Greek), the Power Plant site has dimensions 349m by 222m including the boiler, turbine building (with the turbine pedestal inside) and the racks (main and secondary).

Basic Design of the main structures of the plant (turbine building, gas and steam pedestal, and primary and secondary racks including a BIM model of the structures)



C/ Barquillo 23, 2º | 28004 Madrid | España
T. (+34) 917 014 460 | F. (+34) 915 327 864
www.fhecor.com | fhecor@fhecor.es

